



CARMANI
creation with passion

*Leonardo
da Vinci*



MASTERS OF PAINTING

Excellent Collection

Set / 2 cup 0,25l with saucer ϕ 16,8cm



MACCHINE DA GUERRA

032-0105

UOMO VITRUVIANO

Set / 2 cup mocca 0,1l with saucer ϕ 13cm



032-0707
 UOMO VITRUVIANO
 INVENTIONS - FLYING MACHINES

032-0706
 DAMA CON L'ERMELLINO
 GIOCONDA

Set / 1 cup 0,25l with saucer ϕ 16,8cm



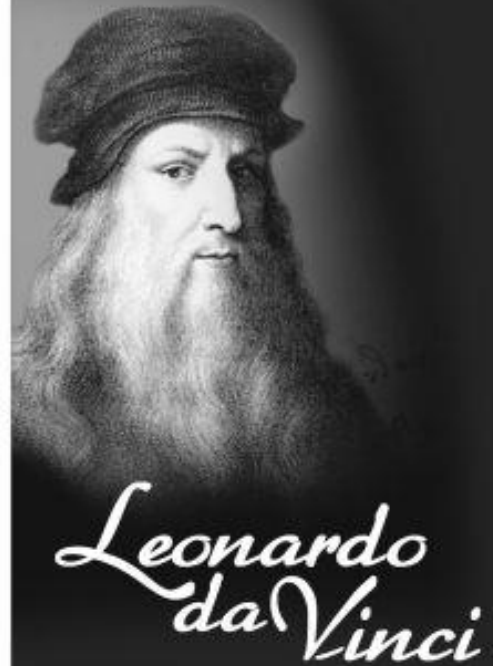
032-0104
GIOCONDA



032-0103
DAMA CON L'ERMELLINO



032-0101
UOMO VITRUVIANO



Leonardo
da Vinci

1452-1519

A true Renaissance man, and most multifariously talented person in the history of the world.

Outstanding Italian Renaissance painter, architect, philosopher, musician, writer, explorer, mathematician, engineer, anatomist, inventor, geologist. Leonardo has often been described as the archetype of the "Renaissance man". It is his talent for painting conferred Leonard the greatest popularity. Two of his works, the Mona Lisa and The Last Supper occupy the leading positions on the lists of the most famous paintings. Also of great importance in the history of art is Leonardo's sketch "Vitruvian Man". To the present times most probably only 15 of his paintings have yet survived.

1pc/ Mug 0,38l / Box 12x9x9,5cm



032-0301
 UOMO VITRUVIANO

032-0302
 MACCHINE DA GUERRA



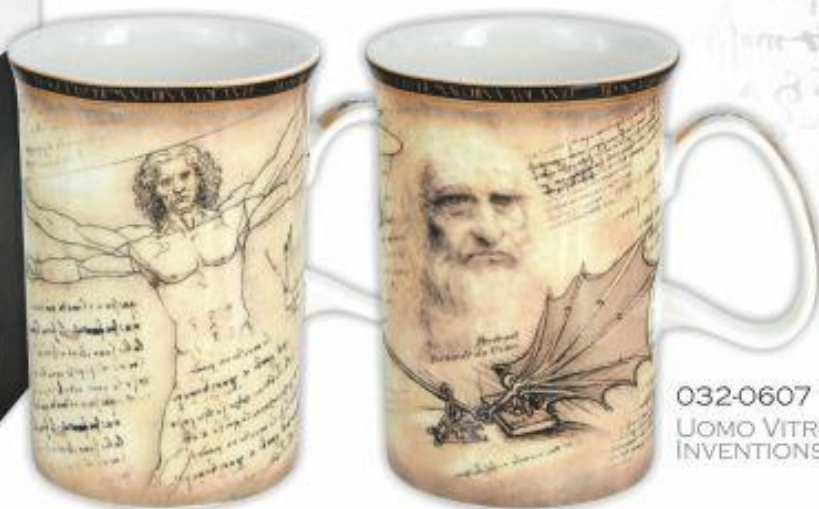
032-0304
 GIOCONDA



032-0303
 DAMA CON L'ERMELLINO



1pc/ Mug 0,35l / Box 10x20x22cm



032-0607
 UOMO VITRUVIANO
 INVENTIONS - FLYING MACHINES

2pcs/ Mug 0,4l / Box 31,5x21,5x11cm



032-0405
MACCHINE DA GUERRA
UOMO VITRUVIANO



032-0406
DAMA CON L'ERMELLINO
GIOCONDA

1pc/ Mug 0,35l / Box 10x20x22cm



032-0606
DAMA CON L'ERMELLINO
GIOCONDA



LADY WITH AN ERMINE

Portrait of a Lady with an Ermine is an oil painting by Leonardo da Vinci painted around 1489-1490, made on a walnut board sized 54.7 x 40.3 cm. It presents Cecilia Gallerani, mistress of the Duke Ludovico Sforza. Currently located in the Czartoryski Museum in Crakow. It is one of the most valuable national museum pieces of artwork and the only work of Leonardo da Vinci kept in Poland. In 2011, during a trip to Europe it was insured at a record level of 300 million euros. During portraying of Cecilia there were already conducted negotiations on her marriage with Ludovic of Beatrice d'Este. That is why Leonardo da Vinci could not show lovers entwined in a loving embrace. Ermine, resting in the bosom of the model, is a veiled representation of the situation. Weasel can also be seen as an allegory of motherhood, because according to tradition, dating back to antiquity it facilitates delivery. The artist put the pet in such a way as to overlay the model's pregnancy. In 1800 the painting was bought by Prince Adam Jerzy Czartoryski, and gifted it to his mother Izabela Czartoryski. During the November Uprising it was transported to Paris. At the end of the nineteenth century, around 1880 it was brought to Krakow where a Czartoryski Museum was under development. In 1939 the painting was looted by the German occupiers, served as a decoration in Wawel residence of Hans Frank, then deported to Germany, where in 1946 was again brought back to Krakow.



Set/ 2 cup 0,27l with saucer ϕ 15,5cm/ Box 31,5x21,5x11cm



032-0905
MACCHINE DA GUERRA
UOMO VITRUVIANO



032-0906
DAMA CON L'ERMELLINO
GIOCONDA



Leonardo
da Vinci



GIOCONDA

Mona Lisa (Mona, from Italian „Madonna’), La Gioconda – is an oil painting on poplar wood with dimensions of 77 cm × 53 cm. It was made in the early sixteenth century (c. 1503-1506), and is now located in Louvre, being owned by the government of France. It is one of the most famous and most cherished images of Renaissance. On August 21st 1911 the painting was stolen from the Salon Carré in the Louvre by a 29-year-old museum employee named Vincenzo Perrugia. Theft was spoiled when the thief has attempted to sell the painting to the Gallery of Uffizi, which he then explained with the desire to draw the most well-known works of Leonardo to the country of it's origin. This meant that in the eyes of the Italian public opinion he has become a hero, and therefore was sentenced to only seven months of prison, and the picture itself was returned to France in 1913. Most experts agree that the model is a woman named Lisa Gherardini, the wife of a wealthy Florentine merchant Francesco Giocondo (hence the title, La Gioconda), who commissioned this portrait with da Vinci. Due to the slowness of Leonardo, Francesco Giocondo refused to pay for the finished image. Painter took the complete painting to France and never passed it into the hands of Gioconda.



LEONARDO DA VINCI

Born as a bastard son of a notary, Piero da Vinci and a countrywoman Caterina. In the modern sense he was last name- less as the term "da Vinci" means "from the city of Vinci". His full name, given to him at birth, is "Leonardo di ser Piero da Vinci", that is, son of sir Piero from the city of Vinci. Leonardo has often been described as the archetype of the "Renaissance man" whose seemingly inexhaustible curiosity matched only the strength of his creativity. Widely considered to be one of the greatest painters of all time and probably the most multifariously talented person in the history. Of great importance in the history of art is Leonardo's Vitruvian Man sketch. As an engineer, Leonardo made time leading projects, including developing the concept of a helicopter, a tank, the basics of plate tectonics, the double hull of the boat, and many other innovations. A relatively small number of his ideas were put into practice in his time. Some of his lesser ideas, such as automatic winder for spools or machine to check the tensile strength of the wire , are all his "quiet" work.

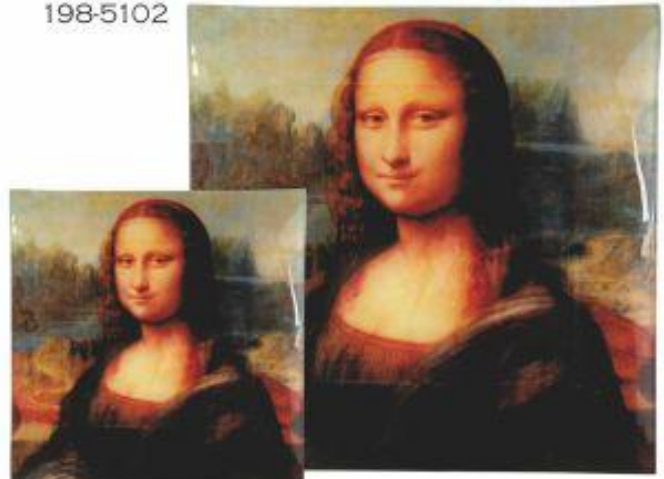
1pc/ Glass plate 20x28cm
198-5202
GIOCONDA



1pc/ Glass plate
30x30cm
198-5302



1pc/ Glass plate 25x25cm
198-5102



1pc/ Glass plate 13x13cm
198-5002

1pc/ Hanger for handbag ϕ 4,5cm
013-0303

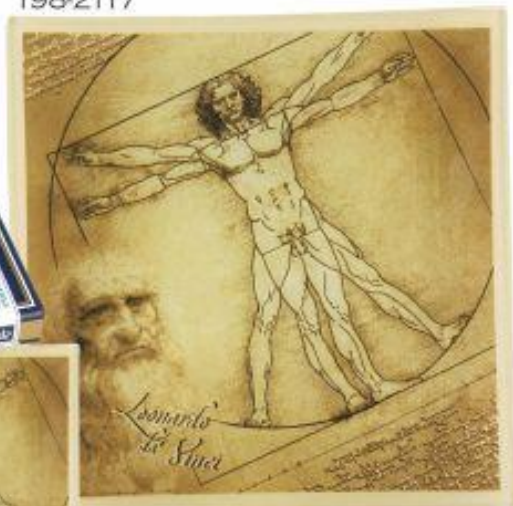


Ask for a gift box

1pc/ Glass plate
20x28cm
198-5401



1pc/ Glass plate 30x30cm
198-2117



1pc/ Glass plate 13x13cm
198-2017

1pc/ Glass plate 25x25cm
198-5101



1pc/ Glass plate 13x13cm
198-5001

Looking-glass
19,8x7,2cm



013-0104

013-0103

1pc/ Hanger for handbag ϕ 4,5cm
013-0304



Display 36pcs/ Coasters 10,5x10,5x0,4cm
Box 23x16,6x9,5cm



032-0500
MACCHINE DA GUERRA
UOMO VITRUVIANO
DAMA CON L'ERMELLINO
GIOCONDA



6 pcs/ Coasters 10,5x10,5x0,4cm

1pc/ Bookmark h14,5cm



032-0504
GIOCONDA



032-0503
DAMA CON L'ERMELLINO



032-0501
UOMO VITRUVIANO



032-0502
MACCHINE DA GUERRA



013-0204

013-0203

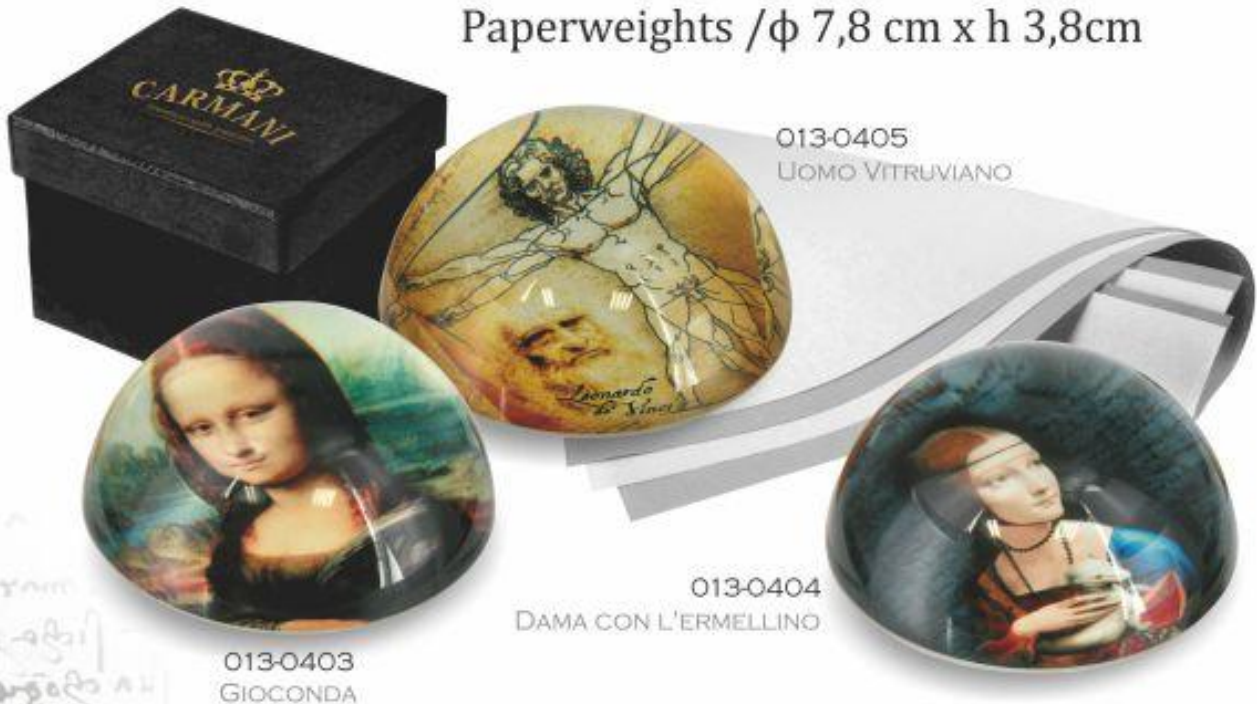
1pc/ Mirror ϕ 7cm, Box 11x11cm



181-1202
GIOCONDA

181-1201
DAMA CON L'ERMELLINO

Paperweights / ϕ 7,8 cm x h 3,8cm



013-0405
UOMO VITRUVIANO

013-0404
DAMA CON L'ERMELLINO

013-0403
GIOCONDA

Set 6pcs/ Crystal Magnets 3x3x0,7cm

013-0003



1pc / Paper bag
32x26x12cm
032-0020



back

1pc / Paper bag
35x15x15cm
032-0022



1pc / Paper bag
25x20x10cm
032-0021



back

1pc / Paper bag
23x16x10cm
032-0000



back


HANIPOL
IDEAL GIFT GROUP
POLAND Sosnowiec 41-219 Szymanowskiego str. 9b tel: +48 32 263.55.58
POLAND Warszawa 03-151 379 Modlińska str. tel: +48 22 676.89.39
www.hanipol.com

www.carmani-gift.com