



**CARMANI**  
CREATED WITH PASSION

# WASSILY KANDINSKY

Of all the arts, abstract painting is the most difficult. It demands that you know how to draw well, that you have a heightened sensitivity for composition and for colors, and that you be a true poet. This last is essential.

*Pierre Dissard*

French contemporary artist working in the depths of pop-art and street art, illustrator, graphic designer, photographer and stage designer. Photographer Pierre Dissard was one of the most prolific and popular artists of his time, avant-garde artist with a very commercial sensitivity.

---

EXCELLENT PORCELAIN

# WASSILY KANDINSKY

2pcs/ cup 0,12L & saucer 12,2cm

1pc / mug 0,4L



046-0101  
Lenbachhaus Gallery  
**MUNICH, GERMANY**  
COLOR STUDY / 1913  
SQUARES WITH CONCENTRIC CIRCLES



046-0201  
Lenbachhaus Gallery  
**MUNICH, GERMANY**  
COLOR STUDY / 1913  
SQUARES WITH CONCENTRIC CIRCLES



1pc / cup 0,25L & saucer 15cm



046-0301  
Lenbachhaus Gallery  
**MUNICH, GERMANY**  
COLOR STUDY / 1913  
SQUARES WITH CONCENTRIC CIRCLES

# WASSILY KANDINSKY

2pcs/ cup 0,12L & saucer 12,2cm

1pc / mug 0,4L



046-0102  
The Met Fifth Avenue  
**NEW YORK, USA**  
FREE CURVE TO THE POINT / 1925  
ACCOMPANYING SOUND  
OF GEOMETRIC CURVES



046-0202  
The Met Fifth Avenue  
**NEW YORK, USA**  
FREE CURVE TO THE POINT / 1925  
ACCOMPANYING SOUND  
OF GEOMETRIC CURVES



1pc / cup 0,25L & saucer 15cm



046-0302  
The Met Fifth Avenue  
**NEW YORK, USA**  
FREE CURVE TO THE POINT / 1925  
ACCOMPANYING SOUND  
OF GEOMETRIC CURVES

# WASSILY KANDINSKY

2pcs/ cup 0,12L & saucer 12,2cm

1pc / mug 0,4L



046-0103  
Museum of Modern Art  
**NEW YORK, USA**  
WITH AND AGAINST / 1929



046-0203  
Museum of Modern Art  
**NEW YORK, USA**  
WITH AND AGAINST / 1929



1pc / cup 0,25L & saucer 15cm



046-0303  
Museum of Modern Art  
**NEW YORK, USA**  
WITH AND AGAINST / 1929

# WASSILY KANDINSKY

2pcs/ cup 0,12L & saucer 12,2cm

1pc / mug 0,4L



046-0104  
Museum Kunstsammlung  
Nordrhein-Westfalen  
**DÜSSELDORF, GERMANY**  
TRANSVERSE LINE / 1923



046-0204  
Museum Kunstsammlung  
Nordrhein-Westfalen  
**DÜSSELDORF, GERMANY**  
TRANSVERSE LINE / 1923



1pc / cup 0,25L & saucer 15cm



046-0304  
Museum Kunstsammlung  
Nordrhein-Westfalen  
**DÜSSELDORF, GERMANY**  
TRANSVERSE LINE / 1923

# Pierre Dissard

2pcs/ cup 0,12L & saucer 12,2cm

1pc / mug 0,4L



046-0105  
Gallery Maestro  
**PARIS, FRANCE**  
VIRTUOSO



046-0205  
Gallery Maestro  
**PARIS, FRANCE**  
VIRTUOSO



1pc / cup 0,25L & saucer 15cm



046-0305  
Gallery Maestro  
**PARIS, FRANCE**  
VIRTUOSO

**CARMANI**  
CREATED WITH PASSION

# Pierre Dissard

2pcs/ cup 0,12L & saucer 12,2cm

1pc / mug 0,4L



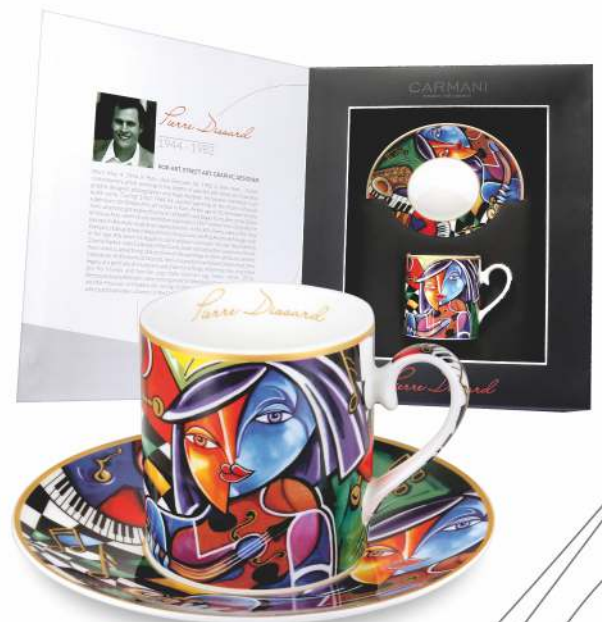
046-0106  
Gallery Maestro  
**PARIS, FRANCE**  
INSTRUMENTALIST



046-0206  
Gallery Maestro  
**PARIS, FRANCE**  
INSTRUMENTALIST



1pc / cup 0,25L & saucer 15cm



046-0306  
Gallery Maestro  
**PARIS, FRANCE**  
INSTRUMENTALIST



## WASSILY KANDINSKY

1866 - 1944

EXPRESSIONISM, BAUHAUS, DER BLAUE REITER

One of the pioneers of abstract modern art, Wassily Kandinsky started interrelation between color and form to create an aesthetic experience that engaged the sight, sound, and emotions of the public. He believed that total abstraction offered the possibility for profound expression and copying from nature only interfered with this process. His visual vocabulary developed through three phases, shifting from his early, representative canvases and their divine symbolism to his rapturous and operatic compositions, to his late, geometric and biomorphic flat planes of color. Kandinsky's art and ideas inspired many generations of artists, from his students at the Bauhaus to the Abstract Expressionists after World War II.



## *Pierre Dissard*

1944 - 1982

POP-ART, STREET ART, GRAPHIC DESIGNER

French contemporary artist working in the depths of pop-art and street art, illustrator, graphic designer, photographer and stage designer. Originally he painted in the style of abstract expressionism. His Pop Art breakthrough came in the late 80s when he began to paint popular musicians. He was fascinated by Charlie Parker, John Coltrane, Miles Davis, and tried to play the saxophone himself. Soon comics, advertising and motives of the paintings of other artists became his inspiration. In the works of Dissard, there is a predominant music theme; most of his legacy are portraits of musicians and cheerful settings, where the main characters are his friends and familiar jazz clubs interior.

[www.carmani-gift.com](http://www.carmani-gift.com)



Made for Hanipol FH Poland

Sosnowiec 41-219  
9b Szymanowskiego str.  
tel: +48 32 263.55.58

Warszawa 03-151  
379 Modlińska str.  
tel: +48 22 676.89.39